

2023/2024 ACCOMMODATION COMPENDIUM

HAY NSW



EAT • STAY • PLAY • IN HAY



Experience
history together



HISTORIC VEHICLE AND MEMORABILIA COLLECTION

158 Hardinge Street, Deniliquin NSW 1300 3 DEPOT

depotdeni.com.au



Only an hour to Deniliquin - perfect for a day trip!

CRUIZIN
DINER



Cruise on in and chill out!

★ ALL DAY BREAKFAST ★ DINE IN ★ TAKEAWAY ★

162 Hardinge Street, Deniliquin NSW

OPEN 7 DAYS

1300 0 DINER



welcome to HAY

Big Sky Country

Hills Corner Store - 02 6993 1971

- Opposite Hay Pool, Lachlan St
- **Facebook** - Hills Corner Store at your convenience
- **Hours** - Mon - Fri 5am - 5pm
Sat - 5:30am - 4pm
Sun - 7am - 4pm



*Family owned,
and local*



Harrison & Sons IGA
190 Lachlan St, Hay
(02) 6993 1029



HOME 135 LACHLAN ST, HAY
02 6993 1625
TIMBER & HARDWARE
GETTING THE TRADES DONE



HARRY'S HOME HARDWARE
HOME
TIMBER AND HARDWARE
**IF WE
DON'T HAVE IT,
YOU REALLY
DON'T NEED IT**

Thank you for those that don't while browsing

FRESH BREAD DAILY,
PASTRIES, SANDWICHES,
HOT FOOD, MILKSHAKES,
COFFEE, GLUTEN AND
DAIRY FREE OPTIONS
AVAILABLE

OPENING HOURS
MON - FRI
6:30AM - 3:30PM
SAT
6:30AM - 1:30PM



LOSEFFRON'S
HOT BREAD

149 LACHLAN ST, HAY
02 6993 1130

Auto Go Hay

**OPEN 7 DAYS A WEEK
SUPPORTING YOUR AUTOMOTIVE NEEDS & MORE**

AUTO GO HAY
77-79 Lachlan Street HAY
PH 02 69933039



"We had a marvellous stay in what is a truly unique building. The scale, furnishings and attention to detail were so much more than we expected. The hospitality was second to none and the breakfast was truly memorable"

~S~

THE BANK BED & BREAKFAST

LUXURY IN THE HEART OF THE RIVERINA

www.bankbedandbreakfast.com.au

The Plains are calling

#haynsw #theplainsarecalling

The vast, flat landscape of Hay Plains, which surround the town on the edge of NSW's Riverina region is claimed to be one of the world's three flattest places.

Ask any local however and it takes the number one spot, on par with the Sahara Desert. Certainly, you'd be flat-out finding many that are any flatter.

It's a bit like the Nullarbor you're having when you're not driving all the way to the Nullarbor, and it's mind-blowing to learn the Plains are the same size as Switzerland (roughly 40,000 square kilometres.)

South of Hay, the wide lands were known by the drovers of the early 1900s as Old Man Plain. Old timers recall tales of drover's cooks shaving wood off fenceposts and mile parkers to burn for cooking; the practise became so widespread that the posts were replaced with concrete.

The flat country surrounding Hay doesn't mean there isn't anything to see.

If you're lucky enough to be in this part of the world as a storm rolls in, you're in for a show of truly epic proportions. More predictably, sunrise and sunset are spectacular times to visit the Hay Plains and on a clear night – and that's most of them – the vivid sunset colours give way to the most astonishing star-filled night sky you can imagine. With no big cities casting their lights skywards, the view is breathtaking.

Because the land is so flat, the sky is literally bigger than pretty much anywhere else the planet. Unmissable. The Plains have to be seen to be believed.



JAPP'S PHARMACY
Your friendly family Pharmacy
129 LACHLAN ST, HAY | 02 6993 1604



All Travel Solutions
is available for all travel enquiries.

- Contact Louise
- 0448933017
- sales@alltravelsolutions.com.au
- 103 Lachlan Street, Hay



133 Lachlan Street Hay
02 6993 1231

HAY

MAXWELL & WILLIAMS
DESIGNER HOMEWARES



Betta HOME LIVING

FURNITURE ZONE

For all your household appliances, furniture, heating & cooling, TV & satellite systems, mobile phone reception boosters & accessories, and portable car fridge/freezers.

We hope you enjoy your stay in Hay

141-143 Lachlan St, Hay
02 6993 1800

YOUR LOCAL

ONE STOP SHOP

Fuel
Takeaway Food
Retail Store
Truck Driver Facilities

South Hay Ampol Roadhouse | Moama St, Hay | Ph 02 6993 1617



Purple Petals Florist

Trust your friendly local Florist, Kerry, to create your vision for your special someone

Christmas all year round | Fresh flowers | Dried
preserved flowers | Giftware



171 LACHLAN ST, HAY & 362 LANG ST, HAY
PH - 0409 154 870

Hay Pizza Bar

Open everyday except Tuesday
5pm - 9pm

171 LACHLAN ST, HAY
PH - 02 6993 1741





BISHOPS LODGE

MOTOR INN



HAY ACCOMMODATION AT ITS BEST

Bishops Lodge is located in Hay, NSW, on the Murrumbidgee River. Freshly renovated in 2011, it has 35 rooms in total, with deluxe Queen rooms, twin share rooms, family rooms, spa rooms and long-term stay rooms with cooking and laundry facilities. With ample off-street car parking, guest laundry, an outdoor pool and a tennis court, it has everything you need for a great stay.

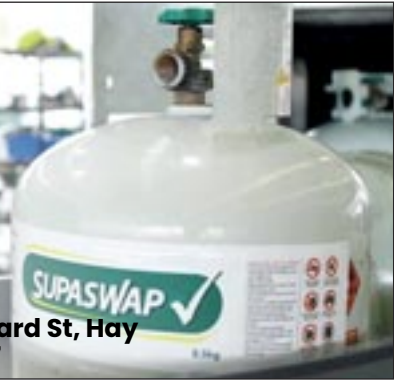
363 Moama St, Hay | 02 6993 3033

STAY • PLAY • HAY

GET YOUR GAS REFILLS HERE



409 Leonard St, Hay
6993 1227



BLACK SHEEP COTTAGE HAY

*Overnight
Holiday Accommodation*



www.blacksheepcottagehay.com

For all bookings call 0428 227 909



62a Lachlan Street, Hay NSW 2711



HAY PLAINS BIG4 HOLIDAY PARKS

- 4 Nailor Street South Hay
- Email: office@big4hay.com.au
- Phone (02) 69931 875
- Office Hours 8:30am - 5:30pm daily



Under the Big Sky

Burraburoon Farmstay

Halfway between Hay and Deniliquin
On the edge of the Outback

Accommodation Camp Sites | Farm Tours | Hiking Trails
Birdwatching | Canoes | Meals on Request | Pet Friendly



☎ Ken Butcher 0419147455

✉ burraburoon@gmail.com

🌐 <https://www.burraburoonfarmstay.com.au>

SOUTH HAY HOTEL



OPEN 7 DAYS FROM 2PM
Bistro Monday - Saturday
from 5:30 pm

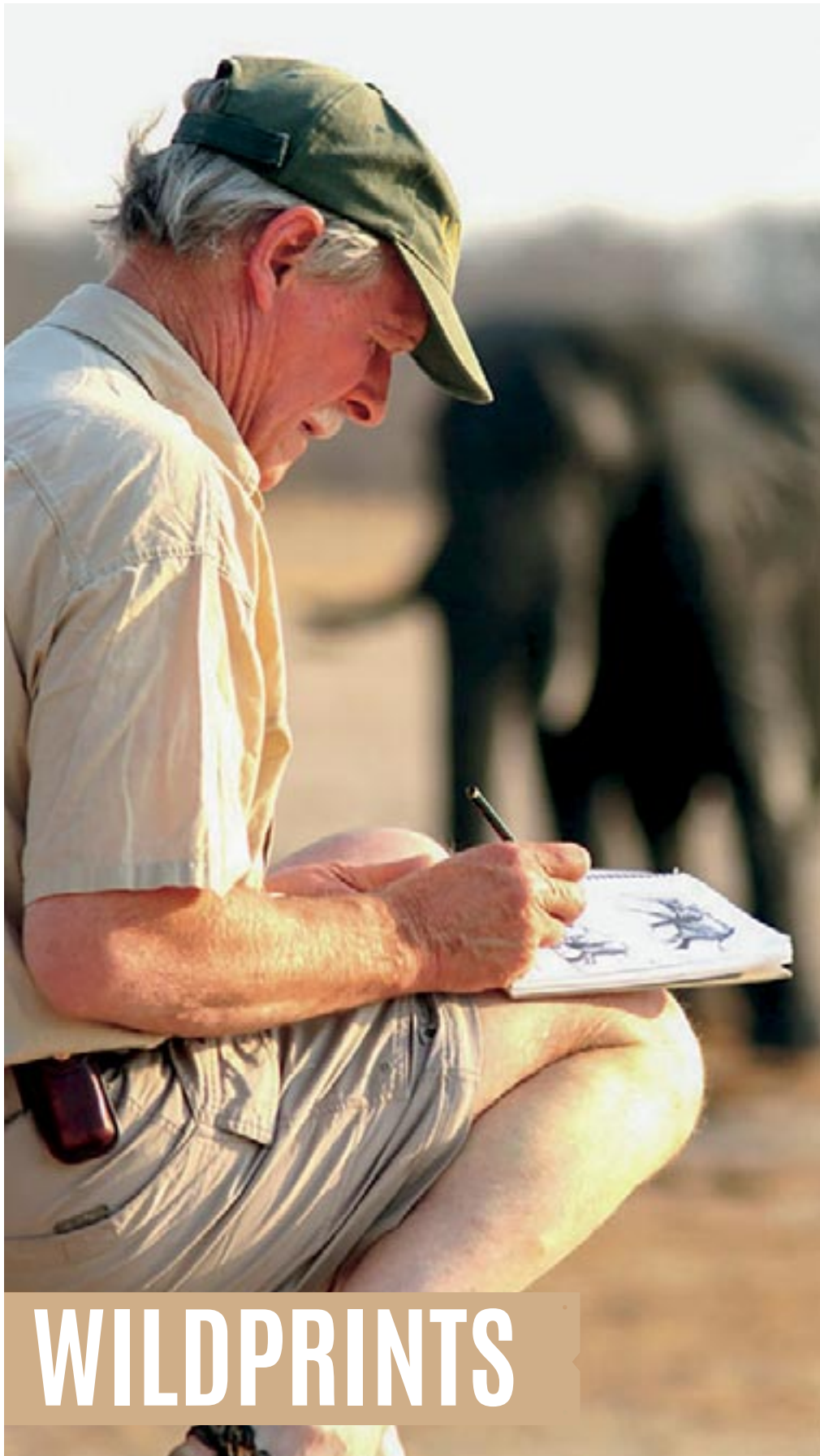
See you at....

7 Nailor Street, South Hay
Phone 02 6993 1031



Find us on
Facebook

southhayhotel@gmail.com



WILDPRINTS

Meet the Artist

Chris McClelland is famous for his unique, fine and intricate pencil drawings of African and Australian wildlife, which is quite a contrast to his previous career. Having spent the last 40 years managing large Australian sheep and cattle stations, one, which ran 40,000 sheep Chris has wonderful fondness for the light and colour of the bush. Through this work, he developed a strong understanding of animal behaviour from observing Australian native animals on the station. His natural talent for drawing was recognised early, and he drew horses for a hobby. Even without formal training his art is now recognised world wide.

Opening hours

Monday - Friday
9am - 5pm
Saturday 9-12

AFTERPAY AVAILABLE GIFT VOUCHERS AVAILABLE

wildprints@bigpond.com
0427 873122

Chris McClelland Gallery
95 Lachlan Street, Hay,
NSW Australia
www.wildprints.com.au

Drop in and say hi and
watch Chris at work!



Dunera Museum

Must See

Hay Prisoner of War Interpretative Centre and Museum houses exhibits, photographs and stories about the experiences of internees, Prisoners of War and the townsfolk of Hay.

Murray St, Hay

9am - 6pm 7 days. Open Entry fee \$5.

Bishop's Lodge Historic House

Bishop's Lodge Historic House is a remarkable iron house and accompanying outbuildings, that were designed and built in 1888 by Bishop Sydney Linton and architect, John Sulman.

351 Moama St, Hay

Remote entry available from the Visitor's Centre.

Hay War Memorial High School Museum

Celebrating its centenary in 2023 the museum is located in the original building of the Hay War Memorial High School which was built in 1923 as both a high school and the town's war memorial to honour those who served in World War I.

Pine St, Hay

9am-3pm Monday to Friday, during school term or by appointment. Entry fee \$3

MOTORMATICS



381 Murray st, Hay

PH: 02 6993 4458 | MOB: 0448 820 010

Open 8am - 5pm

Servicing - Window Tinting - Re-Gas Air Conditioning - Windscreens - Chip Repairs - GME UHF Radios and Aerials - Batteries



Sit down & takeaway meals available, fuel, cold drinks and coffee

**CNR STURT
& COBB
HIGHWAY,
HAY NSW 2711
(02) 6993 1544**



ABN: 29 419 488 948
17 Murray Street, Hay NSW 2711

CAFÉ COFFEE MEALS CATERING

Open 7.30am to 2.30pm
Monday to Saturday

The Riverine Grazier BOOKSHOP



Take a piece of Hay with you!

MORE THAN A NEWSPAPER

• 95 LACHLAN ST, HAY •

02 6993 1002 - WWW.THEGRAZIER.COM.AU

Bidgee Riverside Trail

The Bidgee Riverside Trail is a formed all weather walking track that hugs the curves of the Murrumbidgee River and invites visitors to wander through the Bushy Bend reserve to Sandy Point beach.

The walking track features large public sculptures by artists John Wood and John Woodward, as well as striking Aboriginal murals painted underneath the Hay Bridge. Some interpretative information dots the trail, describing the history of the area, but the best part of the trail is the opportunity to enjoy the picturesque setting; it is easy to forget you are mere metres from the main street.

One of the best ways to use the trail is to hire a free bike from the Outback Information Centre in Moppett Street, to explore.

For families, visit the skatepark and learn some new tricks and stretch your legs.

At nearby Sandy Point Beach you can use the free electric barbecues for a picnic, and take a dip in the majestic Murrumbidgee River. There are also designated areas for free camping, and toilet facilities.

Visitors are reminded this is a bushland setting; keep an eye out for snakes and other hazards.

The New Crown Hotel Motel, situated in Hay NSW, boasts two bars - the lounge bar and the public bar, a great selection of home cooked meals in the restaurant, as well as a landscaped outdoor beer garden and the latest in gaming facilities.

117 LACHLAN ST, HAY | 02 6993 1734

RIVERINA HOTEL

148 LACHLAN STREET
HAY NSW 2711

PH BAR 69931137 | BISTRO PH 69934718

Jolly Jumbuck Bistro
(open seven nights)

Quality food and Great selection of wines

RECENTLY RENOVATED BISTRO!

415 MOPPETT ST, HAY

ERIN TOWNHOUSE

REACH US: 0428938195

HAY VETERINARY CLINIC

W.S. Gardam BVSc(Hons)
Veterinary Surgeon

379 Murray St,
(PO Box 406),
Hay NSW 2711

Phone: 02 6993 1861
Fax: 02 6993 2294
Email: hayvet@tpg.com.au

HAY

EAT
STAY
PLAY



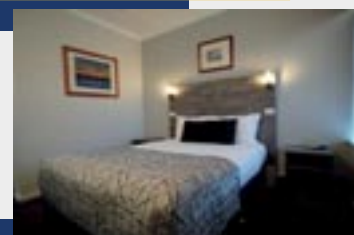
Hay Tourism



Nicholas Royal Motel

☎ 02) 6993 1603

📍 152 Lachlan Street,
Hay, NSW 2711



<https://www.nicholasroyalmotel.com.au/>
info@nicholasroyalmotel.com.au






JEN'S HEALTHY JUNK



Hay's Newest Takeaway shop
- 58 Lachlan St, Hay -

MURRUMBIDGEE COTTAGES
BIDGEE BANKSIDE
ABSOLUTE RIVER FRONTAGE
0437931581





hayraces.com.au




Hay Jockey Club proudly presents **HAY RACES**

COUNTRY RACING AT ITS BEST!
HAY'S BIGGEST DAY!

HELD ANNUALLY ON THE THIRD WEEKEND AFTER THE MELBOURNE CUP

HAY CUP

If the history of the Australian wool export industry isn't your idea of shear excitement, *Think again.*

Located just over the bridge on the confluence of the Sturt and Cobb highways, Shear Outback: the Australian Shearers' Hall of Fame is built inside an architecturally-imposing and admired contemporary building with a fair dinkum shearing shed. The museum details the proud and, at times volatile, history of shearing in Australia with expert demonstrations and talks staged daily in the aforementioned shed.

A daily highlight – and a must-see for any visitor - real shearing shed and regular demonstrations, where you can see close-up how hard this work is. The work and lifestyle of a shearer or roustabout is not for the fainthearted, and Shear Outback is the perfect place for families and tourists to experience the hard graft firsthand.

Don't miss your chance to wander through the museum's interactive displays.

The gift shop is a wonderfully eclectic mix of products – from bush scented candles and soaps, toys, clothing and luxurious leather bags. The jewellery line is impressive and there are the usual assortment of souvenirs.

The café serves simple but tasty country style food, reminiscent of a shearer's cook's menu. The serving sizes are generous, and the prices are reasonable.



26603 Sturt Hwy Hay.
Open 9-4 Monday to Thursday,
9-3 Friday – Sunday
Entry fee \$20 adults,
\$15 concession
\$10 kids under 12 or \$45 family.
Group concessions available.



MUSEUM OPEN TIMES

Monday – Friday
9:00am – 4:00pm

Saturday
9:00am – 4:00pm

Sunday
9:00am – 3:00pm

Closed
Christmas Day, Boxing
Day & Good Friday

P: (02) 6993 4000 | Cnr Sturt & Cobb HWYs, Hay,

Take a road trip

A previously unseen collection of Golden Fleece memorabilia has found a new home at The Depot, in Deniliquin. Just a short 130 kilometre jaunt across the iconic Plains from Hay, The Depot Historic Vehicle and Memorabilia Collection unveiled the collection in March 2023, after an agreement with Ampol allowed the collection to be displayed for the first time.

The collection features 450 items and provides the public with the exciting opportunity to view the pieces all in one location.

The diverse collection also includes items such as model cars, funnels, indoor and outdoor signage, bowlers and fuel tins. The nostalgic will enjoy looking back on road maps, menus, and other paraphernalia.

A fully restored 1948 Fargo fuel tanker is a highlight of the collection, which will be housed at the purpose-built Hardinge Street museum and diner.

In addition to the new collection, visitors to The Depot can enjoy the Purtil family's vast collection, which includes a glimpse back to a bygone era including full lounge room and kitchen set-up.

The Depot is the ideal day trip – head over in the late morning after a relaxed brunch, view the collection and shop in The Depot store, before a burger and fries at the 1950s style diner.

Returning to Hay, visitors can take in the vastness of the Hay Plains then head out to the Sunset Viewing Area on the Cobb Highway, north of town, to take in a magical sunset.

The Depot is open 7 days a week, 10am-4pm at 158 Hardinge Street, Deniliquin. Entry fees are \$17.50 for adults, \$14 for children and seniors, with family rates available. www.depotdeni.com.au.



Constructed in 1889 as the official residence for the Anglican Bishop of Riverina, Bishop's Lodge is an outstanding example of building design and use of materials suitable for life in the harsh summer climate of inland NSW. This iron house is complemented by a garden designed to offer respite from the heat and the business of life. It boasts a unique collection of 'found' roses which have survived in the garden since the late 19th century.

351 Moama St Hay

Opening times
10:00am – 4:00pm
Monday to Friday
9:00am – 12:00pm
Saturdays

Visits outside these times may be organised by contacting the Visitor Information Centre on 02 6333 4045. Admission \$5



ACCOMMODATION

Bidgee Bankside

0437 931 581

Four-bedroom holiday home on the banks of the Murrumbidgee River, within walking distance to shops and dining.

Big 4 Caravan Park

4 Nailor St, Hay NSW 2711

02 6993 1875

Hours:

Monday	8:30 am–5:30 pm
Tuesday	8:30 am–5:30 pm
Wednesday	8:30 am–5:30 pm
Thursday	8:30 am–5:30 pm
Friday	8:30 am–5:30 pm
Saturday	8 am–5:30 pm
Sunday	8 am–5:30 pm

Bishop’s Lodge Motel

363 Moama St, Hay NSW 2711

02 6993 3033

4-star motel

35 spacious rooms

BnB on Lang

0498 449 291

Three-bedroom holiday home.

Sleeps six.

BnB on Macauley

0498 449 291

Three-bedroom holiday home.

Sleeps six.

Burraburoon Farmstay

**1157 Wargam Rd,
Boooroban NSW 2710**

0419 147 455

Open 24 hours. Located on The Long Paddock Touring Route, between Hay and Deniliquin.

Erin Townhouse

415 Moppett St, Hay NSW 2711

0428 938 195

Centrally located holiday home.

Located near Hay Visitors Centre

Hay Caravan Park

Sturt Highway, Hay NSW 2711

02 6993 1415

Powered and unpowered sites, ensuite sites, cabins and ensuite cabins

Pet friendly.

ACCOMMODATION

New Crown Hotel

**117 Lachlan St, Hay NSW
2711**

02 6993 1734

Affordable accommodation.

Pub style rooms with shared facilities, en-suite rooms or two-bedroom apartment available.

Lunch and dinner meals, bar, beer garden, TAB and gaming.

Nicholas Royal Motel

**152 Lachlan St, Hay NSW
2711**

02 6993 1603

Twin, queen, triple, family and king rooms available.

All rooms contain microwave, reverse cycle air conditioning, tea & coffee making facilities, wi-fi and parking.

The Bank BnB

86 Lachlan St, Hay NSW 2710

0422 176 709

Luxurious boutique bed & breakfast accommodation, in the heart of town.

www.bankbedandbreakfast.com.au

ART GALLERY

Wildprints Gallery

95 Lachlan St, Hay NSW 2711

02 6993 4264

Meet award winning wildlife artist Chris McClelland at his working studio.

www.wildprints.com.au

ATTRACTIONS

Balranald Visitors

Information Centre

**83 Market Street, Balranald
NSW 2715**

1800 444 043

Discover the best the Balranald region has to offer visitors, including Lake Mungo and Yanga National Parks.

www.visitbalranald.com.au

ATTRACTIONS

Bishop’s Lodge Historic House & Garden

351 Moama Street, Hay

02 6993 4045

ENTRY FEES - General \$5.00

Enquiry about remote entry at Hay Visitors Centre

Monday - Friday - 10am - 4pm,
Saturday 9am - 12pm

Hay Races

Hay Showgrounds,

Dunera Way, Hay NSW 2711

Held annually, on the third Saturday after the Melbourne Cup.

www.hayraces.com.au

Hay Visitor Centre

407 Moppett St, Hay NSW 2711

02 6993 4045

Open 9am-5pm weekdays and 9am - noon Saturdays.

Tourist information and locally produced goods and souvenirs.

www.visithay.com.au

Shear Outback - The Australian Shearer’s Hall of Fame.

**Sturt Highway, South Hay
NSW 2711**

02 6993 4000

Open 9am-pm daily and 9am - 3pm Sundays.

Shearing museum, demonstrations, gift shop and cafe.

www.shearoutback.com.au

The Depot

**158 Hardinge Street,
Deniliquin NSW 2710**

1300 3 DEPOT

Historic vehicle display and memorabilia collection, gift shop and 50s style diner.

Open 7 days.

Museum 10am-4pm

Cruizin’ Diner 5am-9pm

www.depotdeni.com.au



AUTOMOTIVE

Auto Go Hay

77-79 Lachlan St,
Hay NSW 2711
02 6993 3039

Open 7 Days, stocking a huge range of auto parts, tools, accessories and more.

Gee Automotive & Air Conditioning

12293 Cobb Highway, Hay 2711
0427 933 409

geeauto@bigpond.net.au

Light vehicle repairs and servicing, and vehicle air-conditioning repairs.
9am - 5pm Weekdays.

Les's Engine Repairs

58 Lachlan St, Hay NSW 2711
02 6993 3119

ULP & Dist Fuel. Pushbike, mowers, blower, chainsaw sales & service. Repairs to most small engines.
9am-5pm Weekdays.
9am-12pm Saturdays.

Motormatics

381 Murray St, Hay NSW 2711
02 6993 4458 or 0448 820 01

Open weekdays 8am-5pm
Light & heavy vehicle servicing, and repairs, GME UHF & accessories, wind-screens, batteries and window tinting.

CHEMIST

Japps Pharmacy

129 Lachlan St, Hay NSW 2711
02 6993 1604

Open weekdays 9am-5pm,
Saturdays 9am-noon
Prescriptions & advice, medications and beauty lines.

FOOD & DINING

The Black Sheep Coffee Shop Hay

Address: 62 Lachlan St, Hay NSW 2711
Phone: 0428 227 909

Open weekdays 4.30am - noon
Closed weekends
Coffee, sandwiches, cold drinks, hot pies.

FOOD & DINING

Foodie Friends

131 Lachlan St, Hay NSW 2711
Open Monday to Saturday 7.30am to 2.30pm.
Coffee, cafe, catering & meals

Hill's Corner Store

250 Lachlan St, Hay NSW 2711
Open Monday to Friday 5am - 5pm
Saturdays 5:30am - 4pm
Sundays 7am - 4pm
Smallgoods, newspapers, lollies, sandwiches, hot & cold drinks, ice creams.

Hay Pizza Bar

171 Lachlan St, Hay NSW 2711
02 6993 1741
Mouthwatering fresh pizza.
Open everyday except Tuesday
5pm - 9pm.

Jen's Healthy Junk

58 Lachlan St, Hay NSW 2711
Jen offerers all your favourites - burgers, hot chips, toasties, steak sandwiches, wraps and more.

New Crown Hotel

117 Lachlan St, Hay NSW 2711
02 6993 1734
Open 7 days for lunch and dinner - daily specials available.

Riverina Hotel

148 Lachlan St, Hay NSW 2711
Bar 69931137, Bistro 69934718
Open 7 nights - ask us about our wood fired pizzas.

Robertson's Hot Bread Kitchen

149 Lachlan St, Hay NSW 2711
6993 1130
Fresh bread daily, hot coffee, sandwiches & pasteries. Gluten & dairy free options available.
Open Monday to Friday 6.30am-3.30pm.
Saturdays 6.30am - 1.30pm.

Shear Outback

Sturt Highway, South Hay NSW 2711
02 6993 4000
Open 9am-pm daily and 9am - 3pm Sundays.
Museum, gift shop and cafe.
www.shearoutback.com.au

FOOD & DINING

South Hay Hotel

7 Nailor St, Hay NSW 2711
02 6993 1031
Open 7 days from 2pm.
Bistro open Monday to Saturday from 5.30pm

FUEL

Ampol Hay South

429-431 Moama St, Hay
02 6993 1617
Open 24 hours
Homestyle meals, takeaway food, driver amenities & lounge, heavy vehicle parking.

Les's Engine Repairs

58 Lachlan St, Hay NSW 2711
02 6993 3119
9am-5pm Weekdays.
9am-12pm Saturdays.

Shell South Hay

cnr Sturt & Cobb Highway,
Hay NSW 2711
02 6993 154
Open 7 days.
Fuel, sit down or takeaway meals, coffee & cold drinks

LPG

DHG Harrison Engineering

409 Leonard St, Hay
02 6993 1227
Gas refills & Swap n Go
9am-5pm Weekdays.
9am-12pm Saturdays.

HAIRDRESSER

Cuts Only

119 Lachlan St, Hay NSW 2711
02 6993 1300
Open 5 days a week. Appointments are prioritised. Specialising in both men and womens cuts.

LAUNDRY

Laundromat Hay

198 Lachlan St, Hay NSW 2711
Coin operated, self service laundromat.
Open daily until late.

NEWSAGENT

**Hay Officesmart
Newsagency**
142 Lachlan St, Hay NSW 2711
02 6993 1081

Open 7 days
Monday to Friday 8.30am - 5.30pm,
Saturday 8am - 12.30pm,
Sunday 8.30am to 11am.

PET & CAR WASH

Hay Car & Dog Wash
404 Leonard St, Hay

Coin operated, self service car wash
and dog wash. Open daily until late.

RETAIL

Antonakas Home Hardware
135 Lachlan St, Hay NSW 2711
02 6993 1625

Open 7 days
Monday to Friday 8am - 5.30pm
Weekends 9am - 1pm
Hardware and gifts.

Hay Betta Home Living
143 Lachlan St, Hay NSW 2711
6993 1800.

Monday to Friday 9am to 5.30pm.
Saturdays 9am to noon
Whitegoods & appliances, furniture,
home furnishings and more.

Hay Jewellers
133 Lachlan St, Hay NSW 2711
6993 1231

Monday to Friday 9am to 5pm.
Saturdays 9am to noon
Showcase Jewellers and Maxwell & Wil-
liams designer homewares.

Patchwork on the Plains
194 Lachlan St, Hay NSW 2711
0408 455 461

Patchwork & sewing supplies, and gift
store.
www.patchworkontheplains.com.au
Hours:
Wednesday – Thursday 11am – 3pm
Friday 11am-12:30pm & 3:30-5:30pm
Saturday 10-12pm

RETAIL

Purple Petals Florist
171 Lachlan St, & 362 Lang S,
Hay NSW 2711
0409 154 870

Christmas all year round, fresh flowers &
dried, preserved flowers and giftware.

**The Riverine Grazier
Bookshop**
95 Lachlan St, Hay
02 6993 1002

www.thegrazier.com.au
Browse our wide range of books, gifts
and souvenirs, including works by local
writers.
9am - 5pm weekdays,
9am-noon Saturdays

SUPERMARKET

Harrison's IGA
190 Lachlan St, Hay NSW 2711
02 6993 1029

Open 7 days
Monday to Friday 8am to 6.30pm
Weekends 8am to 5pm

Foodworks Hay
110 Lachlan St, Hay NSW 2711
02 6993 1000

Open 7 days
Monday to Friday 7am to 6.30pm
Weekends 7am to 4pm

TRAVEL

All Travel Solutions
103 Lachlan Street, Hay
02 6993 4444

alltravelsolutions.com.au
For assistance with any travel bookings,
open 5 days a week, 9am-5pm

VET

Hay Veterinary Clinic
379 Murray St, Hay
02 6993 1861

WS Gardam BVSc (Hons)
Caring for animals, large & small
Open 5 days a week, 9am-5pm



DISCOVER BALRANALD & Surrounds



Unearth all the treasures the area has to offer...

- ✓ Begin your journey of discovery at the Balranald Discovery & Information Centre
- ✓ Explore World Heritage Mungo National Park & picturesque Yanga National Park
- ✓ Take in the magic of the iconic rivers & lakes - fish, boat, kayak, camp or just chill
- ✓ Learn the area's rich history - Visit the Goal, Museums, Gallery, Military & Heritage Trails
- ✓ Experience the charm of Euston nestled on the Murray River & picnic at Lake Benanee



visitbalranald.com.au



Balranald Visitor Information Centre
83 Market Street, Balranald NSW
1800 444 043



Euston Visitor Information Centre
At Euston Club, Nixon Street, Euston NSW
03 5026 4244



BnB on Lang

A beautiful, relaxing and spacious home in a beautiful neighbourhood. Home sleeps up to 6 people in comfort.

3-bedrooms, 2-bathrooms, 5 split systems, fully equipped kitchen, laundry facilities, widescreen TV. Every room is beautiful and warm in winter and cool in summer. It also has free Wi-Fi, undercover BBQ entertaining area and lockable undercover car space. Only minutes from the town centre. Close to shopping and dining options. A short walk to South Hay Hotel and park. Across the road from the beautiful Murrumbidgee River, where you can enjoy fishing, kayaking and water sports, and a walking/bike track. Free snacks. Relax with the whole family at this peaceful and luxurious place to stay.

**CONTACT ANDREINA
0498 449 291**

BnB on Macauley

A lovely Oasis on the Hay Plains
A lovely, relaxing and spacious home. Undercover parking, 3 bedrooms sleeping 6, 2 living areas, 4 split systems to warm the house in winter and cool the house in summer, Widescreen TV with free WiFi, fully equipped kitchen and laundry facilities, undercover outdoor area and beautiful landscaped gardens. Free snacks. Relax with the whole family at this beautiful & peaceful place to stay. Plenty of room for a family to enjoy.